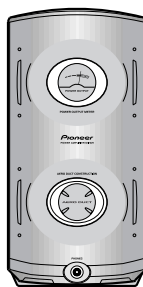


# Service Manual

Pioneer



ORDER NO.  
RRV2129

## STEREO POWER AMPLIFIER M-IS21

THIS MANUAL IS APPLICABLE TO THE FOLLOWING MODEL(S) AND TYPE(S).

Type	Model	Power Requirement	Remarks
	M-IS21		
MYXJ	○	AC220-230V	
NVXJ	○	AC230V	

- This product is a component of a system.  
For the accessories, instruction manuals etc., refer to the service manuals RRV2124 for XC-IS21MD and RRV2123 for XC-IS21T.
- This product does not function properly when independent; to avoid malfunctions, be sure to connect it to the prescribed system component(s), otherwise damage may result.

Component	System		Service Manual	Remarks
	IS-21MD	IS-21T		
CD MD TUNER	XC-IS21MD	—	RRV2124	
CD TUNER DECK	—	XC-IS21T	RRV2123	
STEREO POWER AMPLIFIER	M-IS21	M-IS21	RRV2129	This Service Manual
SPEAKER SYSTEM	S-IS21	S-IS21	RRV2128	

## CONTENTS

1. SAFETY INFORMATION .....	2	7. GENERAL INFORMATION .....	17
2. EXPLODED VIEWS AND PARTS LIST .....	3	7.1 SINGLE OPERATION METHOD .....	17
3. SCHEMATIC DIAGRAM .....	6	8. PANEL FACILITIES AND SPECIFICATIONS .....	18
4. PCB CONNECTION DIAGRAM .....	8		
5. PCB PARTS LIST .....	14		
6. ADJUSTMENT .....	16		

PIONEER ELECTRONIC CORPORATION 4-1, Meguro 1-Chome, Meguro-ku, Tokyo 153-8654, Japan  
 PIONEER ELECTRONICS SERVICE, INC. P.O. Box 1760, Long Beach, CA 90801-1760, U.S.A.  
 PIONEER ELECTRONIC (EUROPE) N.V. Haven 1087, Keetberglaan 1, 9120 Melsele, Belgium  
 PIONEER ELECTRONICS ASIACENTRE PTE. LTD. 253 Alexandra Road, #04-01, Singapore 159936  
 © PIONEER ELECTRONIC CORPORATION 1999

# 1. SAFETY INFORMATION

This service manual is intended for qualified service technicians; it is not meant for the casual do-it-yourselfer. Qualified technicians have the necessary test equipment and tools, and have been trained to properly and safely repair complex products such as those covered by this manual. Improperly performed repairs can adversely affect the safety and reliability of the product and may void the warranty. If you are not qualified to perform the repair of this product properly and safely, you should not risk trying to do so and refer the repair to a qualified service technician.

**WARNING**

This product contains lead in solder and certain electrical parts contain chemicals which are known to the state of California to cause cancer, birth defects or other reproductive harm.

Health & Safety Code Section 25249.6 – Proposition 65


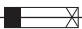
**NOTICE**

(FOR CANADIAN MODEL ONLY)

Fuse symbols  (fast operating fuse) and/or  (slow operating fuse) on PCB indicate that replacement parts must be of identical designation.

**REMARQUE**

(POUR MODÈLE CANADIEN SEULEMENT)

Les symboles de fusible  (fusible de type rapide) et/ou  (fusible de type lent) sur CCI indiquent que les pièces de remplacement doivent avoir la même désignation.

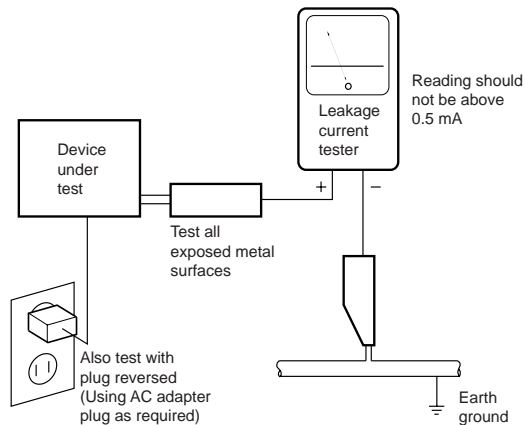
**(FOR USA MODEL ONLY)**

**1. SAFETY PRECAUTIONS**

The following check should be performed for the continued protection of the customer and service technician.

**LEAKAGE CURRENT CHECK**

Measure leakage current to a known earth ground (water pipe, conduit, etc.) by connecting a leakage current tester such as Simpson Model 229-2 or equivalent between the earth ground and all exposed metal parts of the appliance (input/output terminals, screwheads, metal overlays, control shaft, etc.). Plug the AC line cord of the appliance directly into a 120V AC 60 Hz outlet and turn the AC power switch on. Any current measured must not exceed 0.5 mA.



AC Leakage Test

**ANY MEASUREMENTS NOT WITHIN THE LIMITS OUTLINED ABOVE ARE INDICATIVE OF A POTENTIAL SHOCK HAZARD AND MUST BE CORRECTED BEFORE RETURNING THE APPLIANCE TO THE CUSTOMER.**

**2. PRODUCT SAFETY NOTICE**



Many electrical and mechanical parts in the appliance have special safety related characteristics. These are often not evident from visual inspection nor the protection afforded by them necessarily can be obtained by using replacement components rated for voltage, wattage, etc. Replacement parts which have these special safety characteristics are identified in this Service Manual.

Electrical components having such features are identified by marking with a  $\Delta$  on the schematics and on the parts list in this Service Manual.

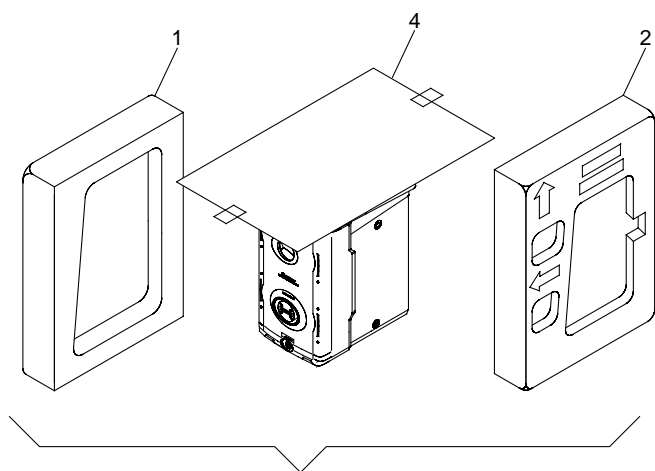
The use of a substitute replacement component which does not have the same safety characteristics as the PIONEER recommended replacement one, shown in the parts list in this Service Manual, may create shock, fire, or other hazards.

Product Safety is continuously under review and new instructions are issued from time to time. For the latest information, always consult the current PIONEER Service Manual. A subscription to, or additional copies of, PIONEER Service Manual may be obtained at a nominal charge from PIONEER.

## 2. EXPLODED VIEWS AND PARTS LIST

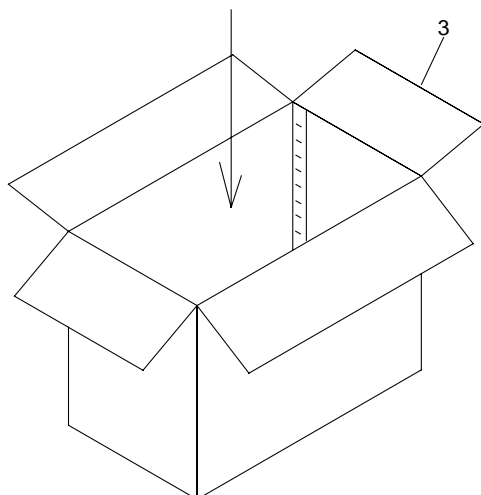
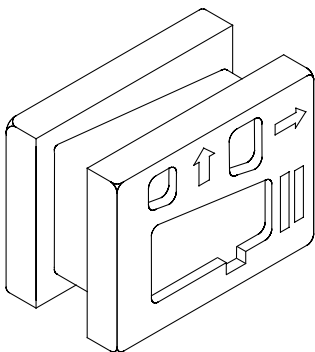
- NOTES:
- Parts marked by "NSP" are generally unavailable because they are not in our Master Spare Parts List.
  - The  mark found on some component parts indicates the importance of the safety factor of the part. Therefore, when replacing, be sure to use parts of identical designation.
  - Screws adjacent to  mark on product are used for disassembly.

### 2.1 PACKING



#### ● PACKING PARTS LIST

Mark	No.	Description	Part No.
	1	Side Pad AL	AHA7238
	2	Side Pad AR	AHA7239
	3	Packing Case AMP MY	AHD7747
	4	Packing Sheet	AHG7053

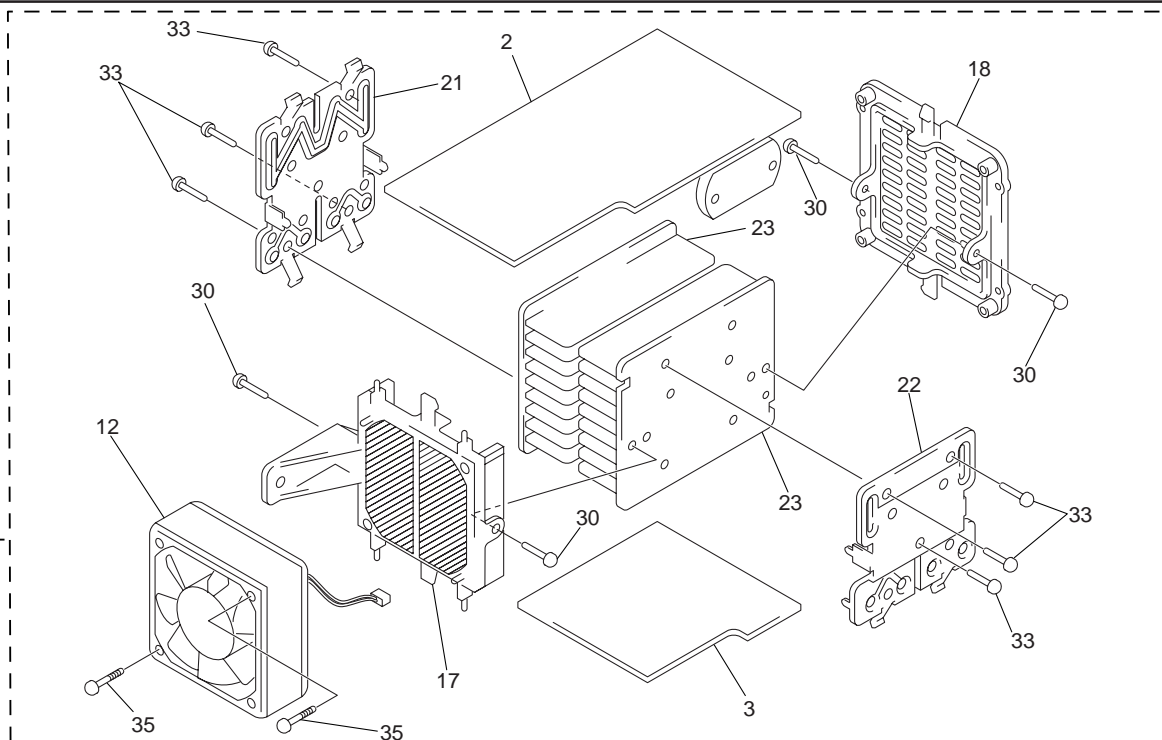




Caution when disassemble.

Even if the power supply code is pulled out from the outlet, neither C11 nor C12 of AF ASSY are discharged.

Please discharge C11 and C12 of AF ASSY by the resistor of 100 Ω or more before removing AF ASSY or POWER SUPPLY ASSY. There is a possibility to destroy the transistor, and Please discharge by the resistor of 100 Ω or more.



**(1) EXTERIOR PARTS LIST**

Mark	No.	Description	Part No.	Mark	No.	Description	Part No.
	1	AF Assy	AWU7337		21	Holder	ANG7009
	2	AMP Assy	AWU7340		22	Power PAC Holder	ANG7109
	3	POWER SUPPLY Assy	AWU7344		23	Heat Sink	ANH7058
NSP	4	PRIMARY Assy	AWU7345		24	•••••	
NSP	5	SECONDARY Assy	AWU7350		25	Escutcheon A	AAK7617
	6	HP Assy	AWU7351		26	Top Panel	AAN7192
	7	METER Assy	AWU7353		27	Front Panel A	AMB7564
	8	METER CONNECT Assy	AWU7356		28	Side Bonnet	ANE7242
	9	Power Transformer	ATS7249		29	Screw With Washer	ABA1005
△	10	Fuse (FU1 : T2.5A)	REK1026		30	Screw	ABA1021
	11	VU Meter	AAW7002		31	Screw	FBT40P060FZK
	12	DC FAN Motor	AXM7003		32	Screw	BBZ30P080FMC
NSP	13	Chassis A	ANA7086		33	Screw	BBZ30P180FMC
	14	Rear Panel	See Contrast table (2)		34	Screw	BMZ30P060FZK
	15	Lens A	AAK7614		35	Screw	BPZ30P350FZK
	16	Rubber Sheet	AEB1111		36	Screw	VPZ30P080FMC
	17	Mold A	AMR7005		37	Binder	ZCA-SKB90BK
	18	Mold B	AMR7006	NSP	38	BIND Assy	AWU7349
	19	Lens Holder A	AMR7245				
	20	Reflector	AMR7248				

**(2) CONTRAST TABLE**

M-IS21/MYXJ and NVXJ are constructed the same except for the following :

Mark	No.	Symbol and Description	Part No.		Remarks
			MYXJ Type	NVXJ Type	
	14	Rear Panel	ANC7823	ANC7839	





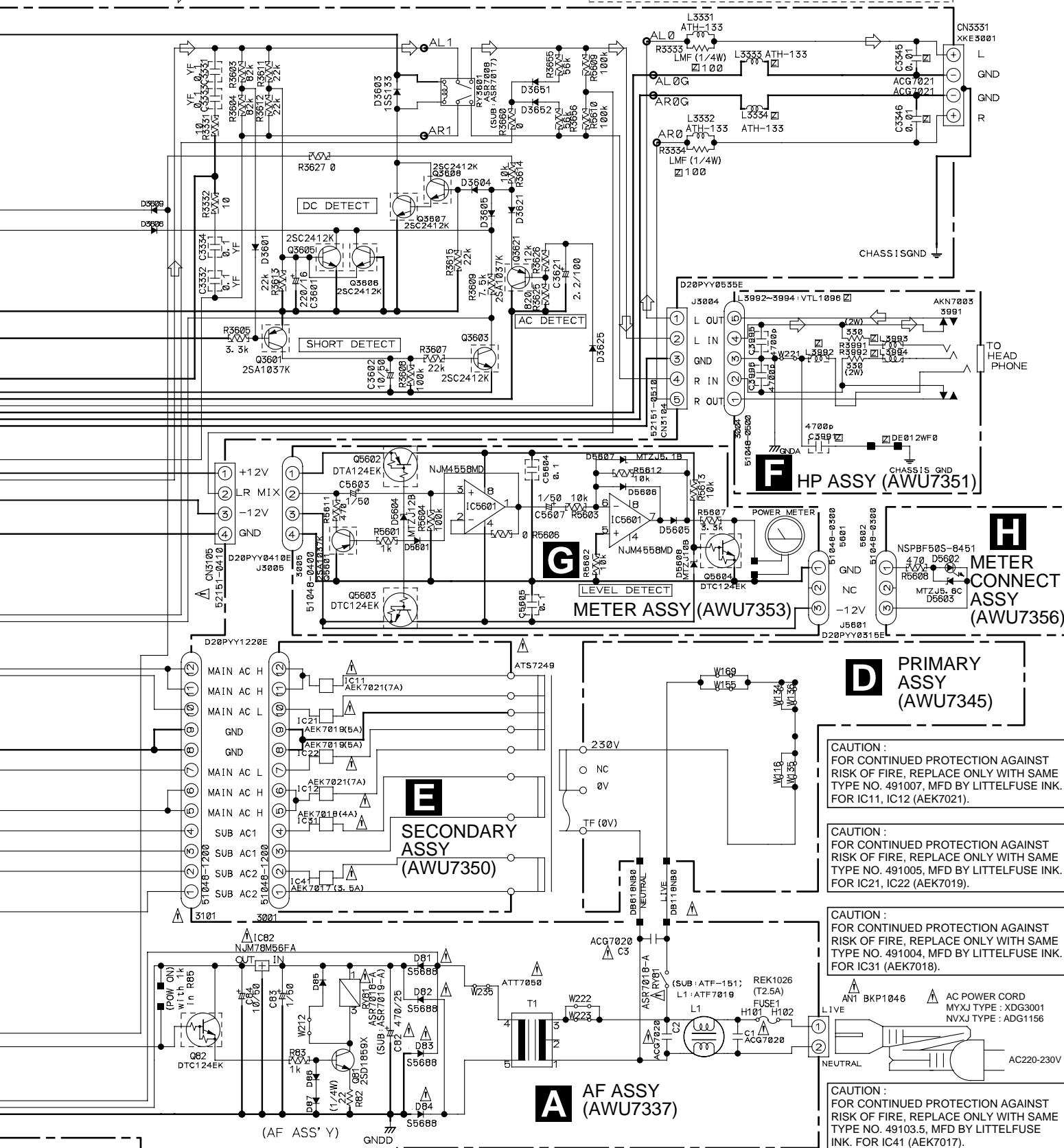
CAUTION : FOR CONTINUED PROTECTION AGAINST RISK OF FIRE, REPLACE ONLY WITH SAME TYPE NO. 491002F, MFD BY LITTELFUSE INK. FOR IC42 (AEK7067).

CAUTION : FOR CONTINUED PROTECTION AGAINST RISK OF FIRE, REPLACE ONLY WITH SAME TYPE NO. 4911.25, MFD BY LITTELFUSE INK. FOR IC33 (AEK7048).

Note : When ordering service parts, be sure to refer to "EXPLODED VIEWS and PARTS LIST" or "PCB PARTS LIST"

- NOTES
1. RESISTORS Indicated in  $\Omega$ ,  $1/100\%$  tolerance unless otherwise noted k:k $\Omega$ , M:M $\Omega$ , otherwise noted p:pF.
  2. CAPACITORS Indicated in capacity ( $\mu$ F)/voltage (V) unless otherwise noted p:pF.
  3. DIODES No mark diode is 1S5133.
  4. CE marking parts are for only MY/NV ass'y.

⇨ : AUDIO SIGNAL ROUTE



NOTE FOR FUSE REPLACEMENT  
**CAUTION** -FOR CONTINUED PROTECTION AGAINST RISK OF FIRE, REPLACE WITH SAME TYPE AND RATINGS ONLY.

**A D E F G H**

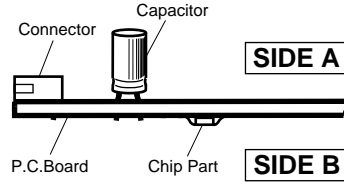
# 4. PCB CONNECTION DIAGRAM

**NOTE FOR PCB DIAGRAMS:**

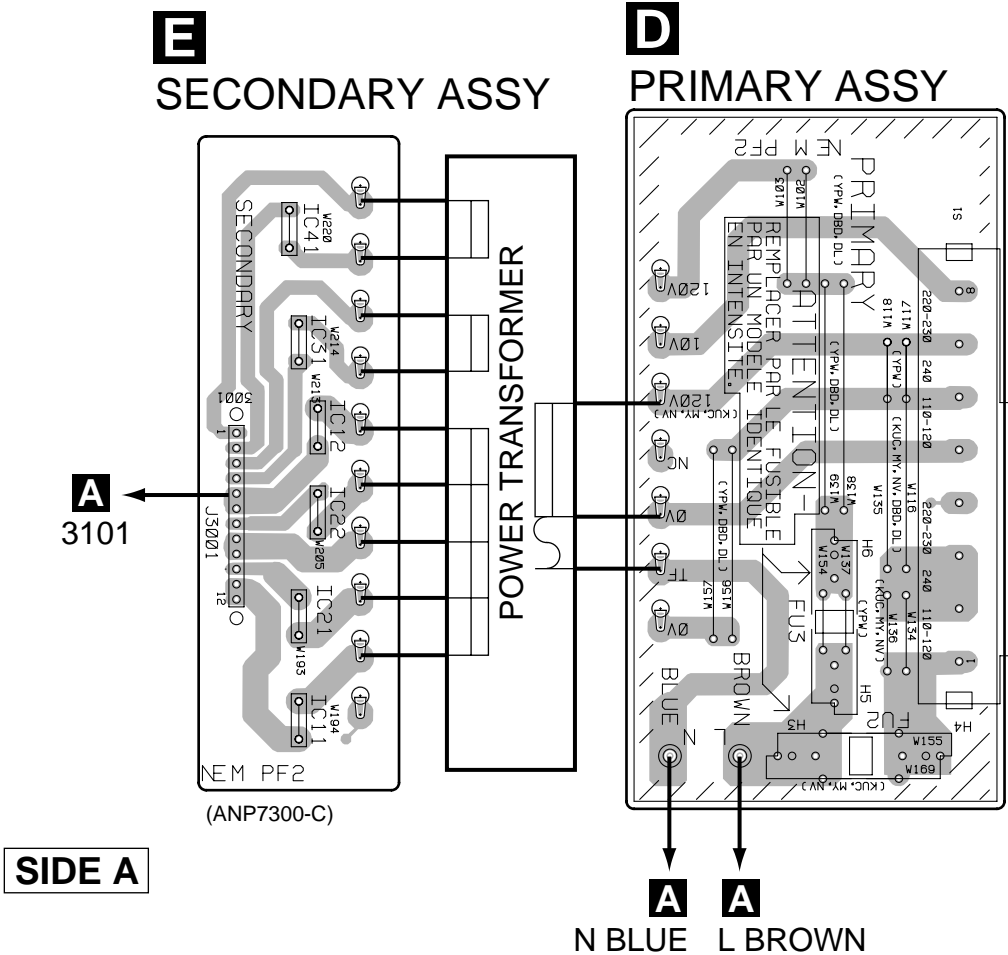
- Part numbers in PCB diagrams match those in the schematic diagrams.
- A comparison between the main parts of PCB and schematic diagrams is shown below.
- The parts mounted on this PCB include all necessary parts for several destination. For further information for respective destinations, be sure to check with the schematic diagram.

Symbol in PCB Diagrams	Symbol in Schematic Diagrams	Part Name
		Transistor
		Transistor with resistor
		Field effect transistor
		Resistor array
		3-terminal regulator

4. Viewpoint of PCB diagrams



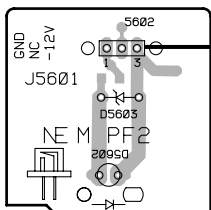
## 4.1 PRIMARY and SECONDARY ASSYS



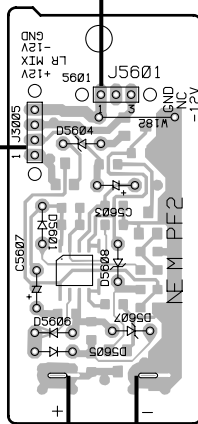


### 4.2 HP, METER and METER CONNECT ASSYS

#### H METER CONNECT ASSY



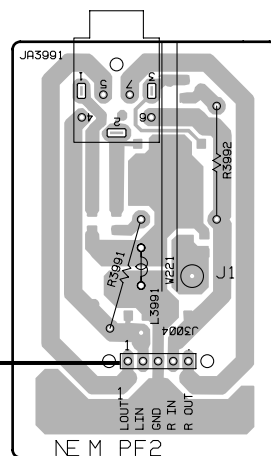
#### G METER ASSY



A CN3105

POWER METER

#### F HP ASSY

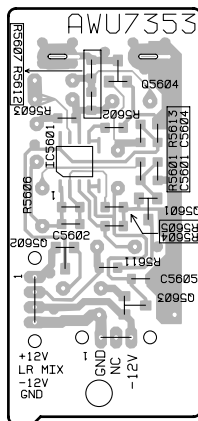


A CN3104

(ANP7300-C)

SIDE A

#### G METER ASSY



Q5604

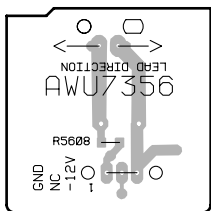
IC5601

Q5601

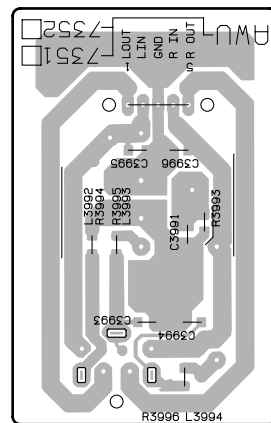
Q5602

Q5603

#### H METER CONNECT ASSY



#### F HP ASSY



(ANP7300-C)

SIDE B

4.3 AF ASSY

A

B

C

D

XC-IS21MD  
or XC-IS21T

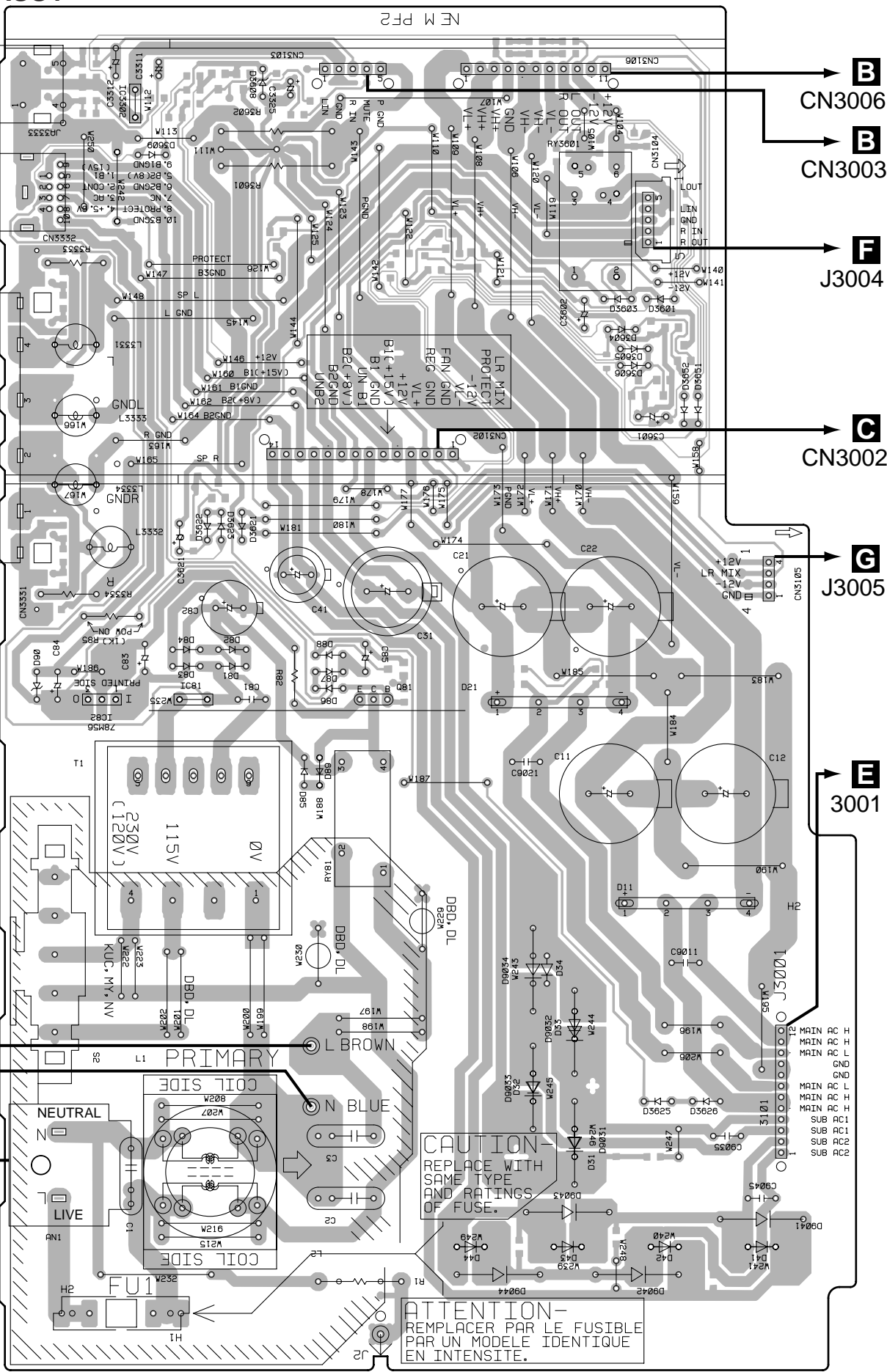
IC82  
IC81  
Q81

**A**  
AF  
ASSY

L BROWN  
**D**  
N BLUE  
AC IN

**SIDE A**  
(ANP7300-C)

10 **A**



**B**  
CN3006

**B**  
CN3003

**F**  
J3004

**C**  
CN3002

**G**  
J3005

**E**  
3001

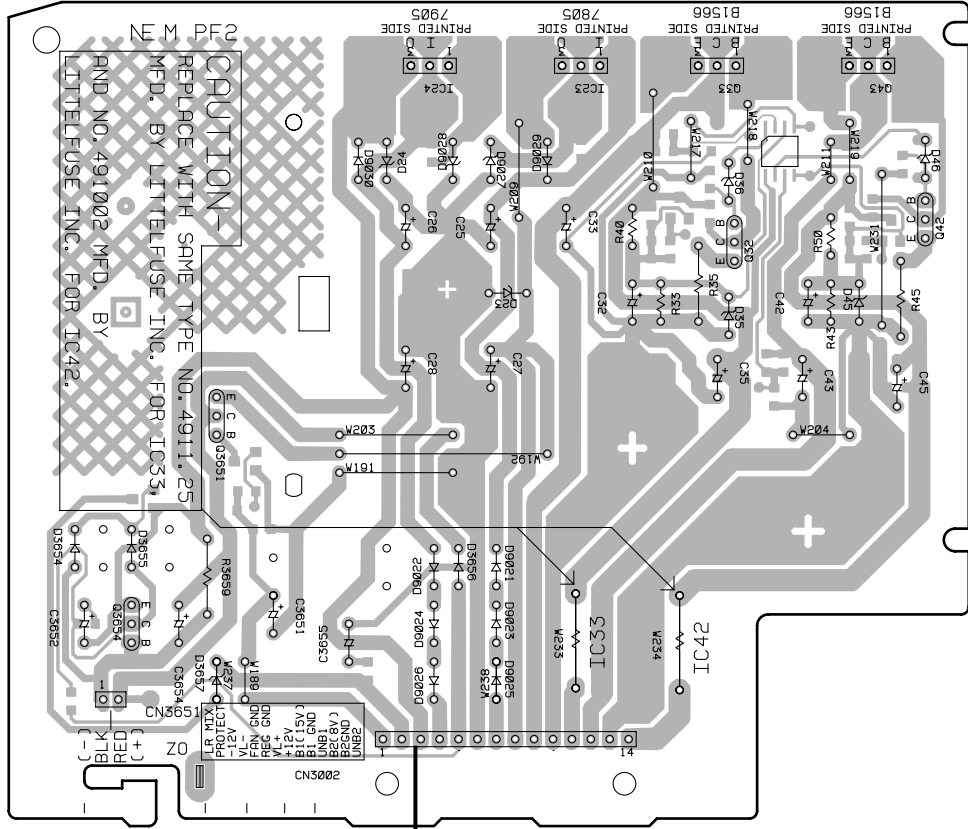
**CAUTION**  
REPLACE WITH  
SAME TYPE  
AND RATINGS  
OF FUSE.

**ATTENTION**  
REPLACER PAR LE FUSIBLE  
PAR UN MODELE IDENTIQUE  
EN INTENSITE.



### 4.4 AMP and POWER SUPPLY ASSYS

## C POWER SUPPLY ASSY



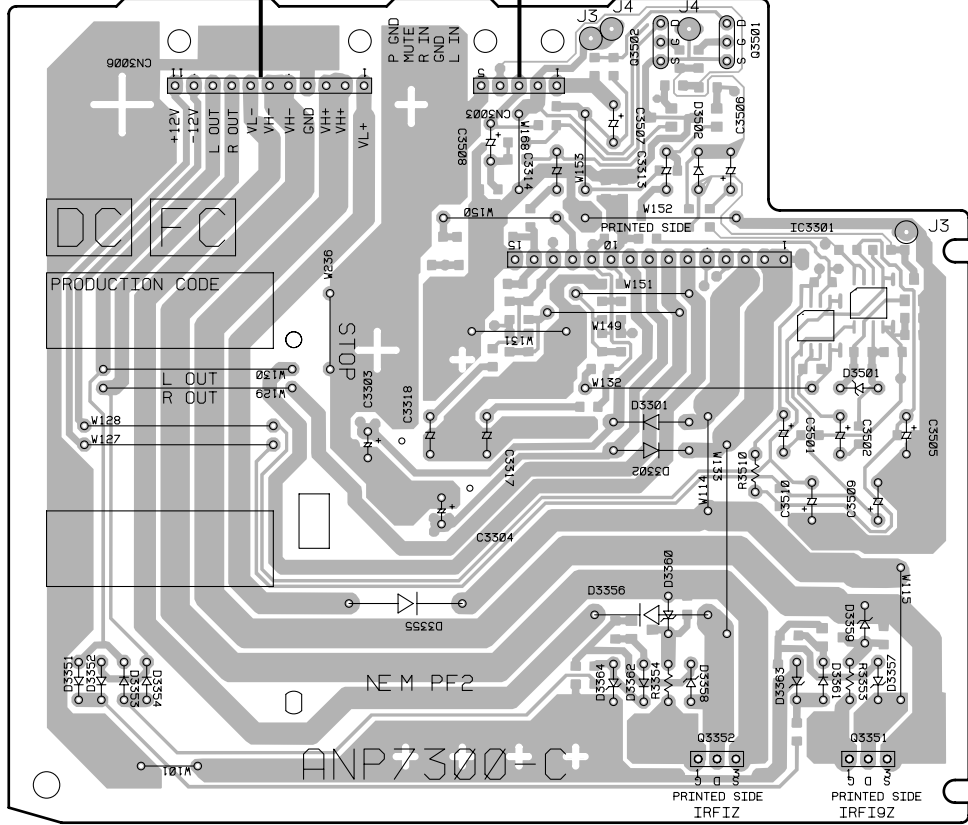
- IC24
- IC23
- Q33
- Q43
- Q42
- Q32
- Q3651
- Q3654
- IC33
- IC42

**A** CN3102

**A** CN3106

**A** CN3103

## B AMP ASSY



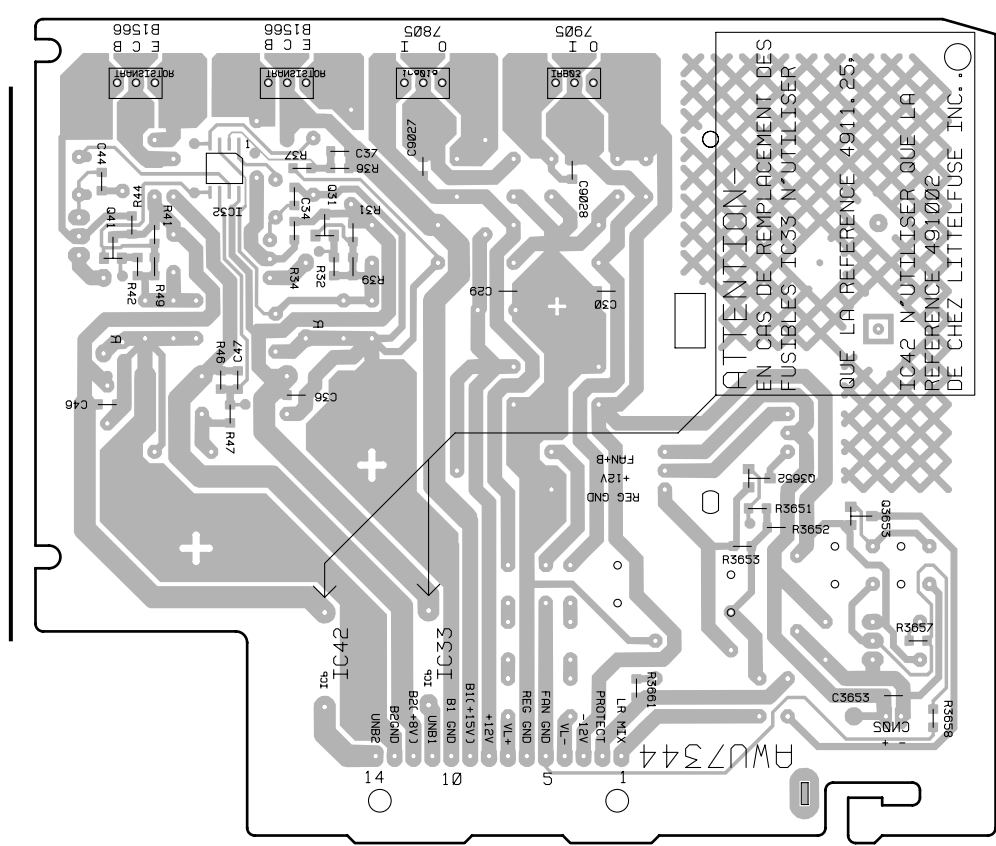
- Q3502
- Q3501
- IC3301
- Q3352
- Q3351

**SIDE A**  
(ANP7300-C)

## B C

IC32  
Q31  
Q41

Q3652  
Q3653

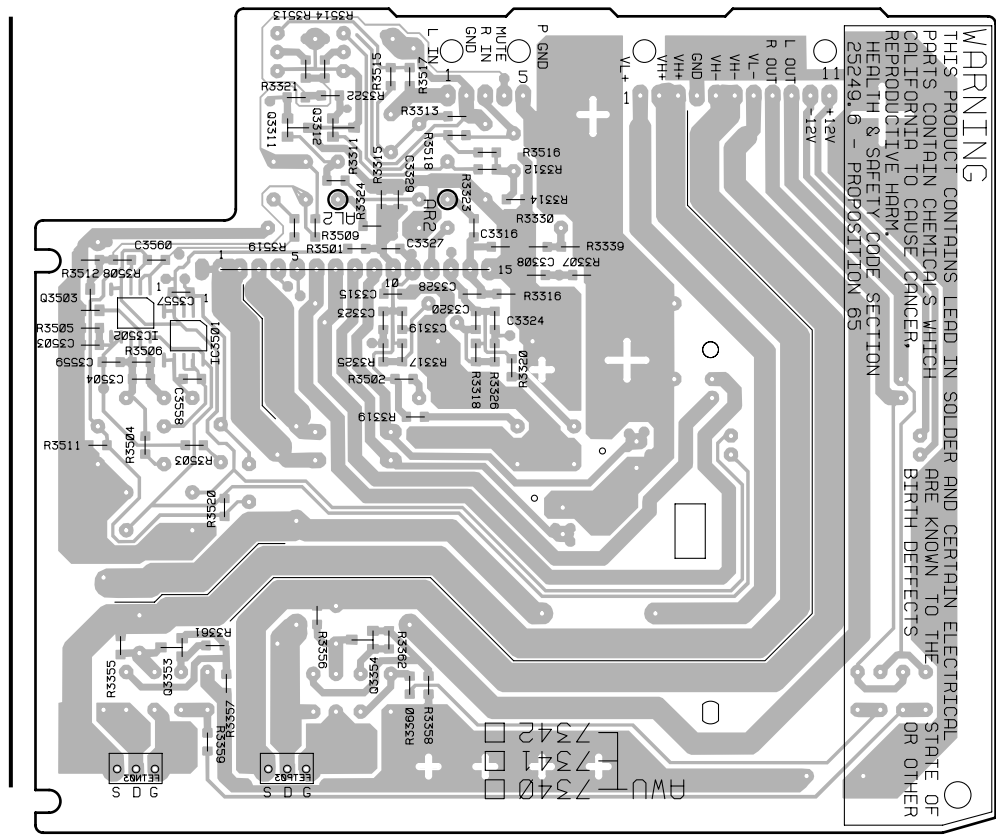


**C**  
POWER  
SUPPLY  
ASSY

Q3311  
Q3312

Q3503  
IC3502  
IC3501

Q3353  
Q3354



**B**  
AMP  
ASSY

**SIDE B**  
(ANP7300-C)

**B C**

# 5. PCB PARTS LIST

NOTES: ● Parts marked by "NSP" are generally unavailable because they are not in our Master Spare Parts List.

● The  $\Delta$  mark found on some component parts indicates the importance of the safety factor of the part. Therefore, when replacing, be sure to use parts of identical designation.

● When ordering resistors, first convert resistance values into code form as shown in the following examples.

Ex.1 When there are 2 effective digits (any digit apart from 0), such as 560 ohm and 47k ohm (tolerance is shown by J=5%, and K=10%).

560	→	56 x 10 <sup>1</sup>	→	561	.....	RD1/4PU	$\begin{matrix} 5 & 6 & 7 \\ \hline \end{matrix}$	J
47k	→	47 x 10 <sup>3</sup>	→	473	.....	RD1/4PU	$\begin{matrix} 4 & 7 & 3 \\ \hline \end{matrix}$	J
0.5	→	R50	.....			RN2H	$\begin{matrix} R & 5 & 0 \\ \hline \end{matrix}$	K
1	→	1R0	.....			RS1P	$\begin{matrix} 7 & R & 0 \\ \hline \end{matrix}$	K

Ex.2 When there are 3 effective digits (such as in high precision metal film resistors).

5.62k	→	562 x 10 <sup>1</sup>	→	5621	.....	RN1/4PC	$\begin{matrix} 5 & 6 & 2 & 1 \\ \hline \end{matrix}$	F
-------	---	-----------------------	---	------	-------	---------	---	---

Mark	No.	Description	Part No.	Mark	No.	Description	Part No.
------	-----	-------------	----------	------	-----	-------------	----------

## LIST OF ASSEMBLIES

NSP	MAIN ASSY	AWK7512
	AF ASSY	AWU7337
	AMP ASSY	AWU7340
	POWER SUPPLY ASSY	AWU7344
NSP	PRIMARY ASSY	AWU7345
NSP	SECONDARY ASSY	AWU7350
	HP ASSY	AWU7351
	METER ASSY	AWU7353
	METER CONNECT ASSY	AWU7356

	C83	CEAT1R0M50
	C3601	CEAT221M16
$\Delta$	C41	CEAT222M25
$\Delta$	C31	CEAT222M35
	C3621	CEAT2R2M2A
$\Delta$	C21, C22	CEAT332M50
$\Delta$	C82	CEAT471M25
	C3325	CEATR10M50
	C3331-C3334	CKSQYF104Z50
	C9011	CQMA102K2E

## AF ASSY

### SEMICONDUCTORS

$\Delta$	IC82	NJM78M56FA
	Q3601, Q3621	2SA1037K
	Q3602, Q3603, Q3605-Q3608	2SC2412K
	Q81	2SD1859X
	Q3313, Q85	DTA124EK
	Q82	DTC124EK
	D3601, D3603-D3606, D3609, D3621	1SS133
	D3625, D3626, D3651, D3652	1SS133
	D85-D87	1SS133
$\Delta$	D11, D21	D3SBA20(A)
	D3608	MTZJ5.6C
$\Delta$	D31-D34, D41-D44	S5566G(TPB2)
$\Delta$	D81-D84	S5688G

### RESISTORS

	R3333, R3334	RD1/4LMF101J
	R82	RD1/4PU220J
	R3601, R3602	RS3LMFR22J
	Other Resistors	RS1/10S□□□□

### OTHERS

$\Delta$	3101	12P CABLE HOLDER	51048-1200
$\Delta$	CN3105	4PJUMPER CONNECTOR	52151-0410
	JA3333	2P PIN JACK	AKB7043
$\Delta$	CN3332	10P SOCKET	AKP7048
$\Delta$	CN3103	5P SOCKET	AKP7051
$\Delta$	CN3106	11P SOCKET	AKP7052
$\Delta$	CN3102	14P SOCKET	AKP7053
	H1, H2	FUSE CLIP	AKR7001
$\Delta$	AN1	AC INLET 1P	BKP1046
	J3001	JUMPER WIRE	D20PYY1220E
	CN3331	4P SPEAKER TERMINAL	XKE3001

### COILS AND FILTERS

L1	LINE FILTER	ATF7019
L3331-L3334	(1μH)	ATH-133

### TRANSFORMERS

$\Delta$	T1	STANDBY TRANSFORMER	ATT7050
----------	----	---------------------	---------

### SWITCHES AND RELAYS

	RY3601	SP RELAY/12V	ASR7008
$\Delta$	RY81		ASR7018

### CAPACITORS

$\Delta$	C1-C3 (10000pF/AC250V)	ACG7020
	C3345, C3346 (10000pF/100V)	ACG7021
$\Delta$	C11, C12 (2200μF/71v)	ACH7117
	C3551-C3554	CCSQCH331J50
	C3602, C84	CEAT100M50

## B AMP ASSY

### SEMICONDUCTORS

	IC3501, IC3502	NJM4558MD
$\Delta$	IC3301	STK407-070B
	Q3354	2SA1037K
	Q3353	2SC2412K
	Q3311, Q3312	2SD2114K
	Q3501, Q3502	2SK246
	Q3503	DTA124EK
$\Delta$	Q3351	IRFI9Z34G
$\Delta$	Q3352	IRFIZ34G
$\Delta$	D3301, D3302	1SR139-100







<u>Mark</u>	<u>No.</u>	<u>Description</u>	<u>Part No.</u>
-------------	------------	--------------------	-----------------

## RESISTORS

All Resistors			RS1/10S□□□J
---------------	--	--	-------------

## OTHERS

5601	3P CABLE HOLDER	51048-0300
3005	4P CABLE HOLDER	51048-0400
J3005	4P JUMPER WIRE	D20PYY0410E

## METER CONNECT ASSY

### SEMICONDUCTORS

D5603		MTZJ5.6C
D5602		NSPBF50S-8451

### RESISTORS

All Resistors			RS1/10S□□□J
---------------	--	--	-------------

### OTHERS

5602	3P CABLE HOLDER	51048-0300
J5601	3P JUMPER WIRE	D20PYY0315E

## 6. ADJUSTMENT

There is no information to be shown in this chapter.

# 7. GENERAL INFORMATION

## 7.1 SINGLE OPERATION METHOD

### Single operation method and input level.

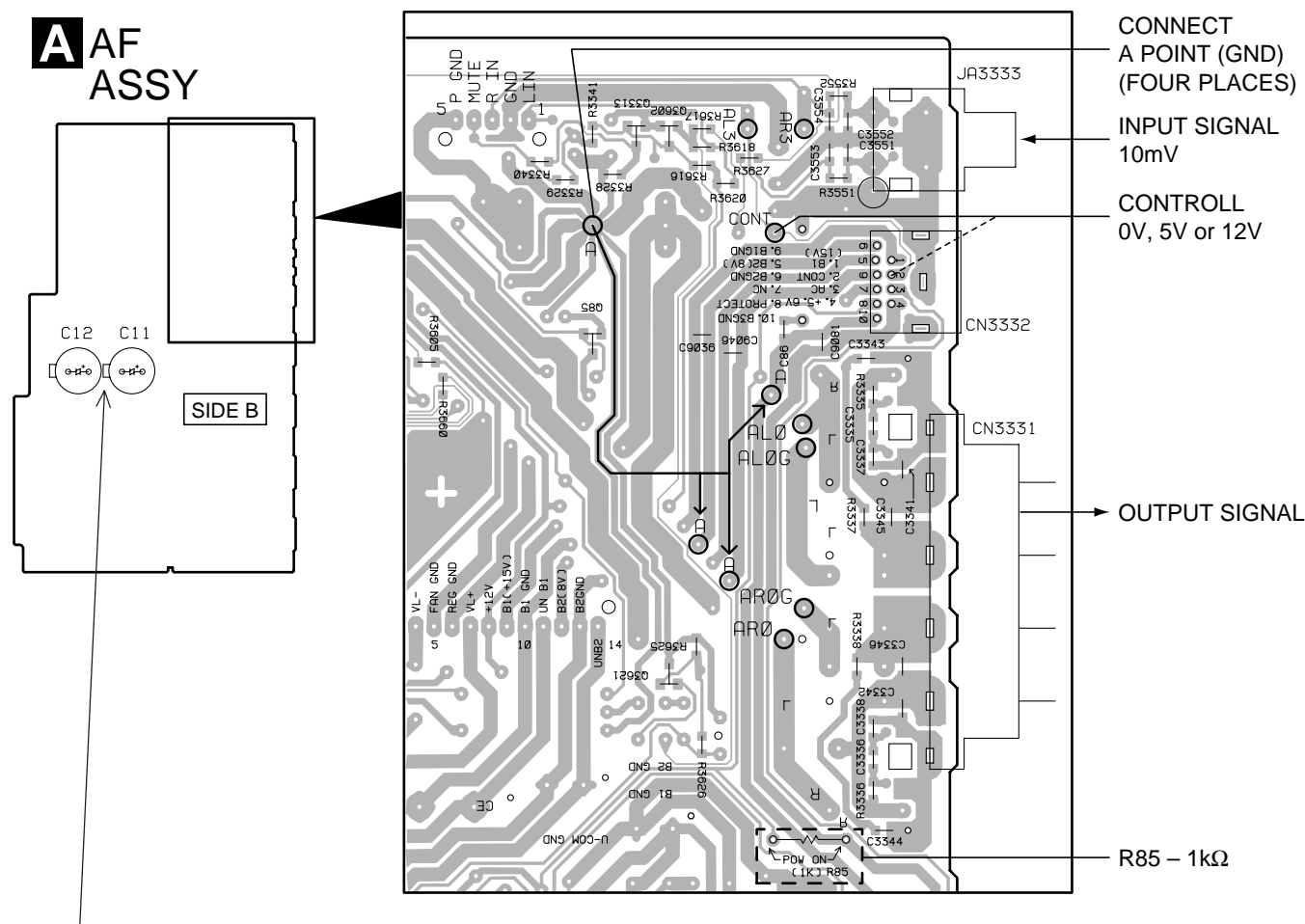
The procedure and the input level of a single operation are shown below.

1. R85 are shorted by 1kΩ.
2. A point of the figure below in four places is connected.  
 GND is not common because it is independent with chassis GND (GND of the amplifier), B1GND, B2GND, and B3GND.  
 The potential of B1GND, B2GND, and B3GND is done by connecting A point in four places as well as chassis GND.
2. The power supply of the product is turned on.
3. the terminal CONT (2 pin of CN3332) are controlled respectively by the following voltages.

	CONT		
	12V	5V	0V
RY	ON	ON	OFF
MUTE	OFF	ON	ON

4. The signal of 10mV is input from input terminal (JA3333), and the output is confirmed with speaker terminal (CN3331).

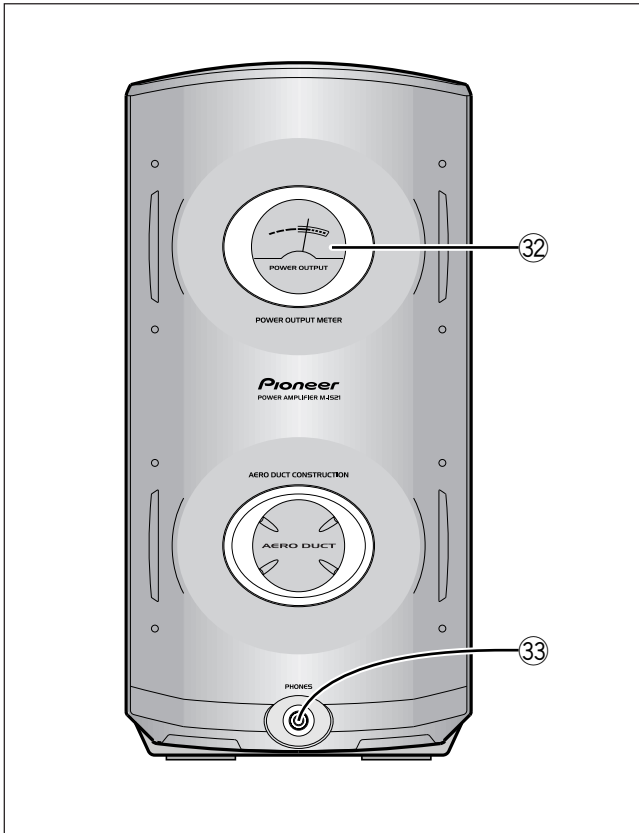
Note : If the music signal is input directly to input terminal (JA3333) with CD PLAYER etc. , the output becomes a large volume because there are 40dB GAIN of the amplifier.



Caution when disassemble.  
 Even if the power supply code is pulled out from the outlet, neither C11 nor C12 of AF ASSY are discharged.  
 Please discharge C11 and C12 of AF ASSY by the resistor of 100 Ω or more before removing AF ASSY or POWER SUPPLY ASSY.  
 There is a possibility to destroy the transistor, and Please discharge by the resistor of 100 Ω or more.

## 8. PANEL FACILITIES AND SPECIFICATIONS

### ● PANEL FACILITIES



③② POWER OUTPUT METER

③③ PHONES jack

### ● SPECIFICATIONS

#### ■ Amplifier Section

Continuous Power (RMS) .....	100 W + 100 Wz
	(1 kHz, THD 10%, 6 Ω)
Continuous Power (DIN) .....	65 W + 65 W
	(1 kHz, THD 1%, 6 Ω)
Music Power (DIN) .....	150 W + 150 W
	(1 kHz, THD 1%, 6 Ω)

- Above specifications are for when the power supply is 230 V.

#### ■ Miscellaneous

Power Requirements .....	AC220-230 V, 50/60 Hz
Power Consumption .....	120 W
Power Consumption in standby mode .....	1 W
Dimensions:	
Power Amplifier .....	150 (W) x 300 (H) x 233 (D) mm
Weight:	
Power Amplifier .....	4.0 kg

#### NOTE:

Specifications and design subject to possible modification without notice, due to improvements.